



Spring Summit 2017 - Welcome and Introduction -

Michael Berthold
KNIME

#KNIMESummit2017

Predictive Analytics at Work



Abflug/Departure

Time Zeit	Flight Flug	Destination/Via Richtung /über	Counter Schalter	Remarks Bemerkungen
0615	EZY4631	Basel		Cancelled
0620	FR 4732	Mailand BGY		Cancelled
0620	FR 162	Brüssel		Cancelled
0625	FR 134	Rox CIA		Cancelled
0630	FR 144	London STM		Cancelled
0640	FR 1146	Thessaloniki		Cancelled
0640	FR 170	Athen		Cancelled
0700	EZY4611	Zürich		Cancelled
0700	EZY4671	Mailand MXP		Cancelled
0700	EZY4701	Brüssel		Cancelled
0705	EZY4561	Amsterdam		Cancelled
0705	EZY8210	London LGW		Cancelled
0710	EZY159Z	Genf		Cancelled
0715	EZY4549	Kopenhagen		Cancelled
0715	FR 196	Budapest		Cancelled

Star Attendees

9: Takahiro Ohshima

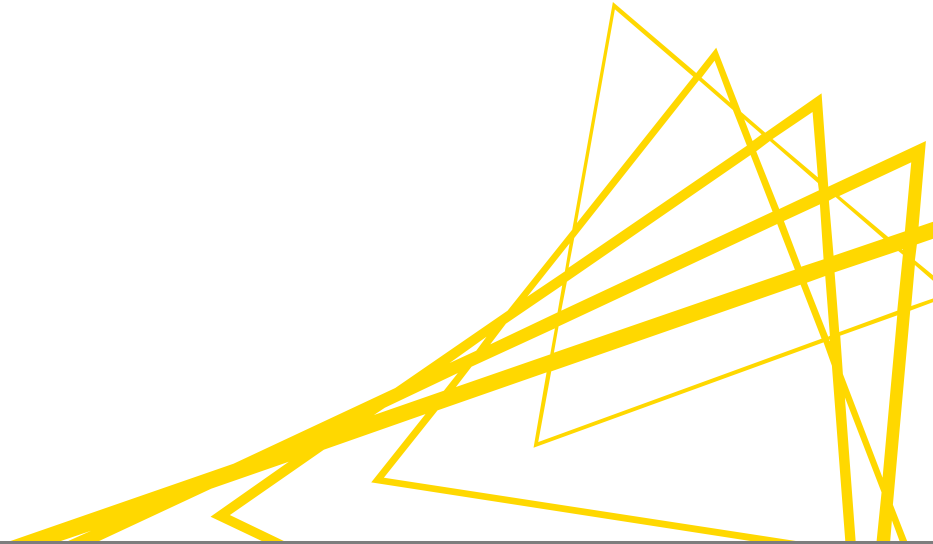
8: Eugen Deretey
Jean-Christophe Mozziconacci

7: Klaus-Peter Huber
Nils Weskamp

Agenda

- Hot Topics and KNIME
- A Brief Look back at 2016
- The 2017 Spring Summit!

Hot Topics: Modern AI in a Nutshell



Recent Topics (NIPS)

- Reinforcement Learning
- Recurrent Neural Networks
- Graphical Models
- Learning Rates, Stochastic Gradient Descent, Weight Normalization...
- Autonomous Car Driving Demos
- Wait: that was 1997

Recent Topics (NIPS 2016!)

- Reinforcement **Deep** Learning
- Recurrent **Deep** Networks
- Graphical Models
- Learning Rates, Stochastic Gradient Descent, Weight Normalization...
- Autonomous Car Driving Demos

AI: Hype vs. Reality

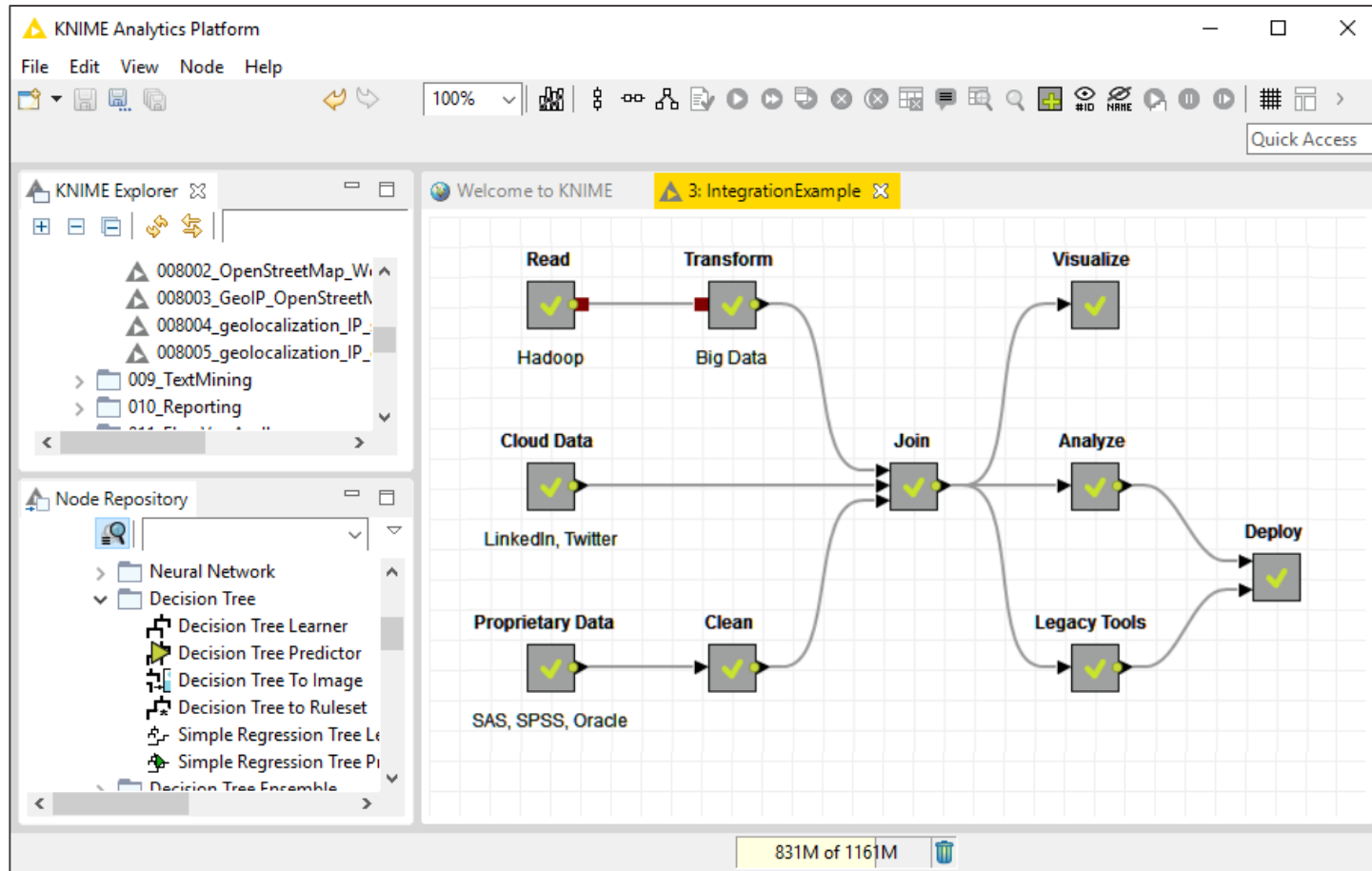
“Temper Your Expectations, But Don’t Give Up On AI”
Mike Gualtieri (Forrester)

(pure AI is the hype, pragmatic AI is what we get)

~~Boring Topic:
Data Integration~~

Hot Topic:
Data Blending

Visual Data (and Tool!) Blending



Will They Blend? blog post series

Table of content

- SAS, SPSS, and MATLAB meet Amazon S3: setting the
- XML meets JSON
- MS Access meets H2. Test your Baseball Knowledge
- Amazon S3 meets MS Azure Blob Storage. A match made in
- Local vs. remote files. Will blending overcome the distance
- MS Word meets Web Crawling. Identifying the Secret
- A Cross-Platform Ensemble Model: R meets Python and
- Twitter meets PostgreSQL. More than idle chat?
- Hadoop Hive meets Excel. Your flight is boarding now
- Open Street Maps (OSM) meets CSV Files and Google
- IBM Watson meets Google API

Will They Blend? Experiments in Data & Tool Blending. Kindle epub meets image JPEG: Will KNIME make peace between the Capulets and the Montagues?



<https://www.knime.org/blog/will-they-blend>

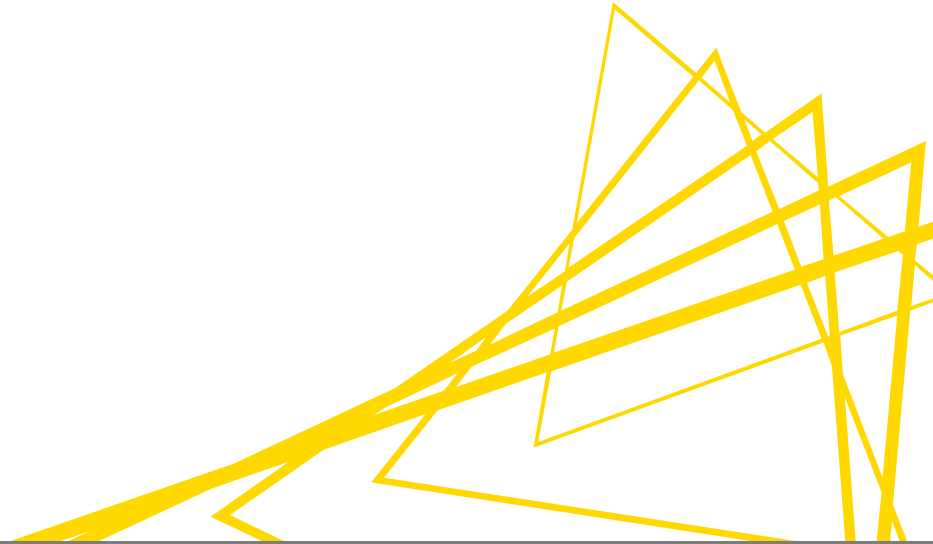
Hot(?) Topic: Scalability, Big Data, Cloud.



Scalability, Big Data, Cloud

- Lots of Work on our Big Data Extensions
 - New&Cooking: KNIME on Spark, H2O Integration
- Blending with / Connectors to Cloud Resources
- Cloud Deployments: Analytics Platform and Server

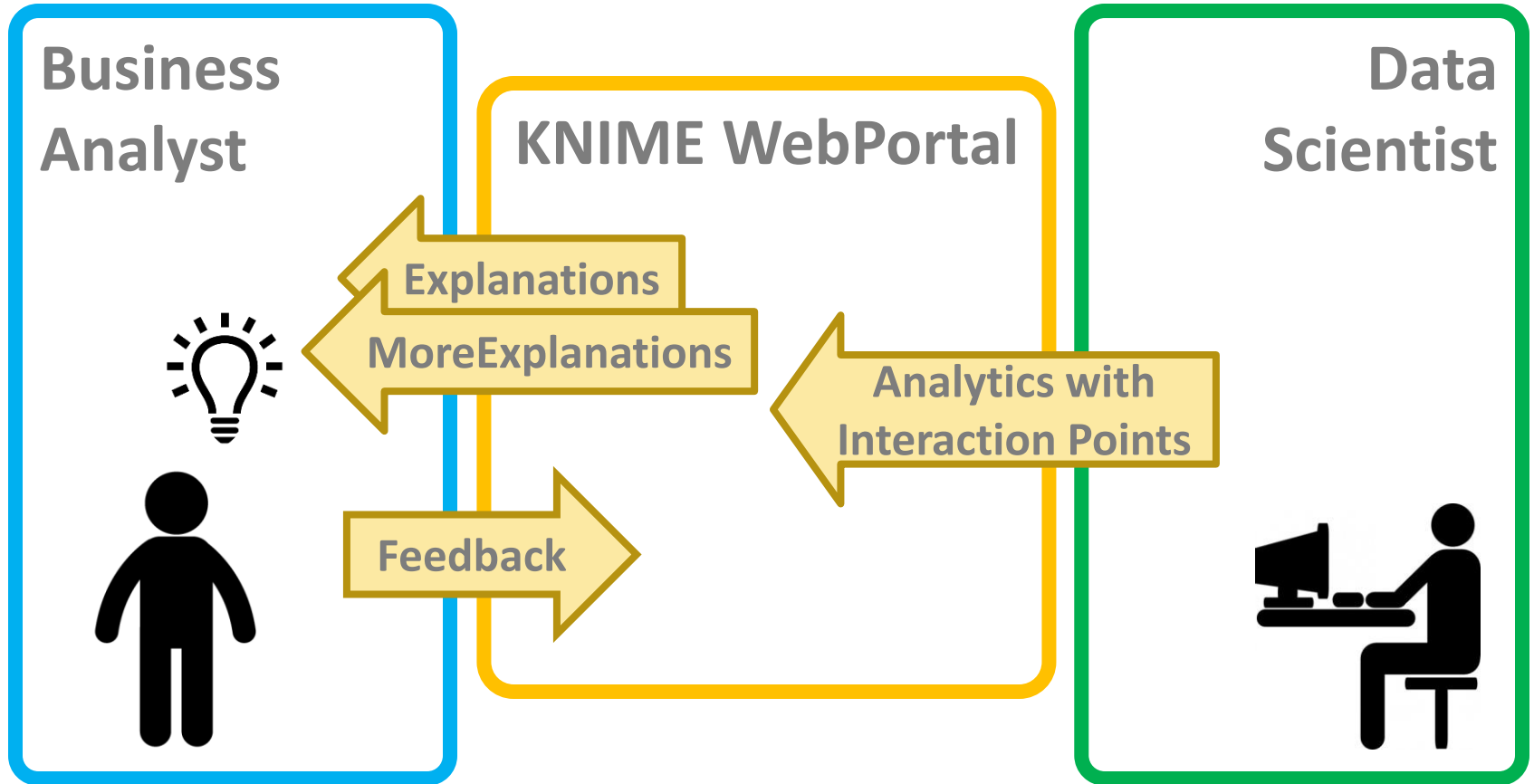
Hot Topics: Guided Analytics



How to make Data Science Useable?

- Black Box:
Limited Applicability (narrow, well-defined tasks)
- Analytical (Workflow) Templates:
Limited Audience (still requires Data Science!)

Remember this?



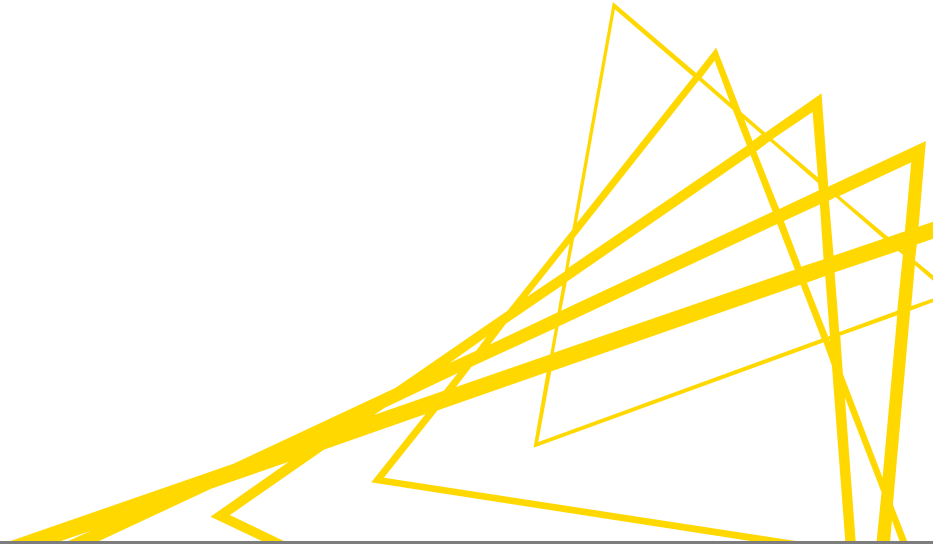
How to make Data Science Useable?

- Black Box:
Limited Applicability (narrow, well-defined tasks)
- Analytical Templates:
Limited Audience (requires Data Science!)
- Guided Analytics =
Workflows as Analytical Applications
Puts Business Analyst in Driver's Seat
(wearing a Safety Belt!)

Guided Analytics at the Summit...

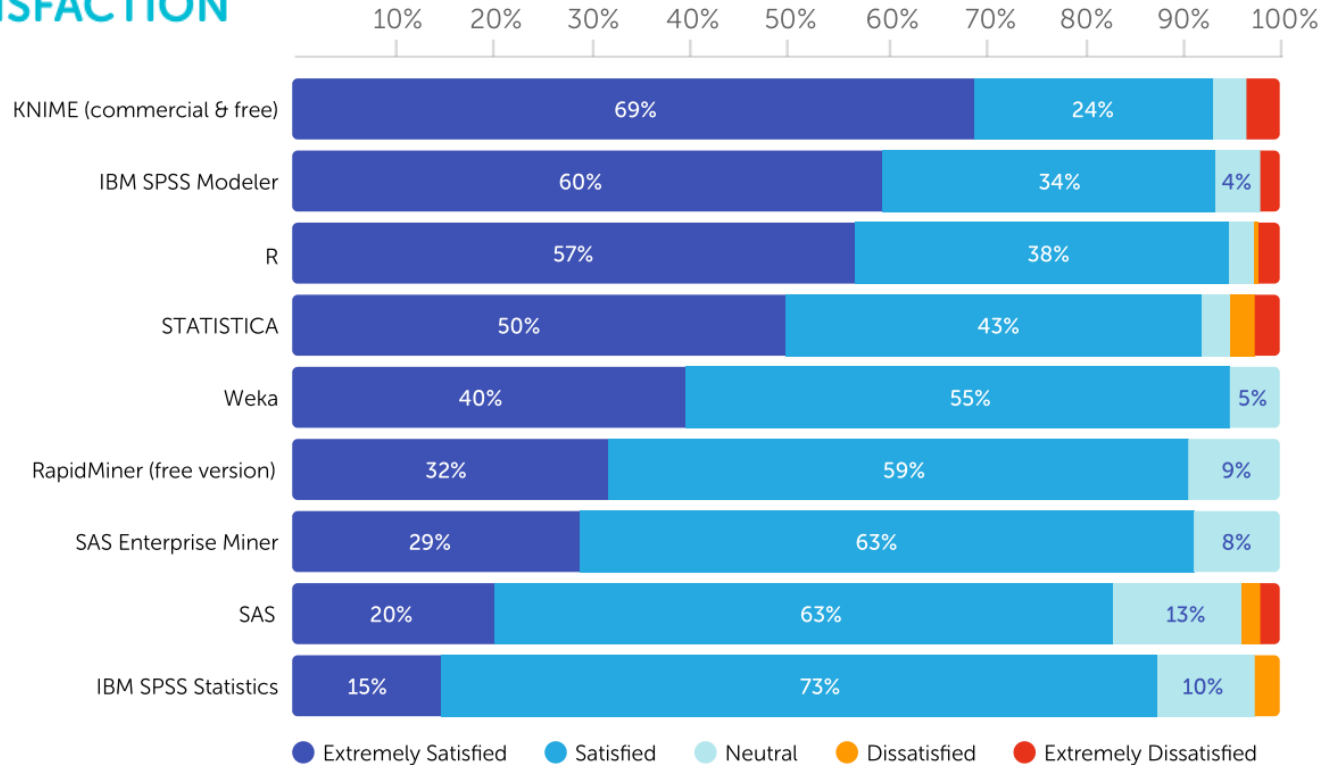
- What's New and Cooking Sessions
 - Lots of progress in 2016/17: WebPortal interactivity
- Two “KNIME Use Case” Talks on Thursday
 - Greg Landrum for Life Science
 - Rosaria Silipo for Customer Intelligence

An Update on 2016...



Analyst Updates

TOOL SATISFACTION



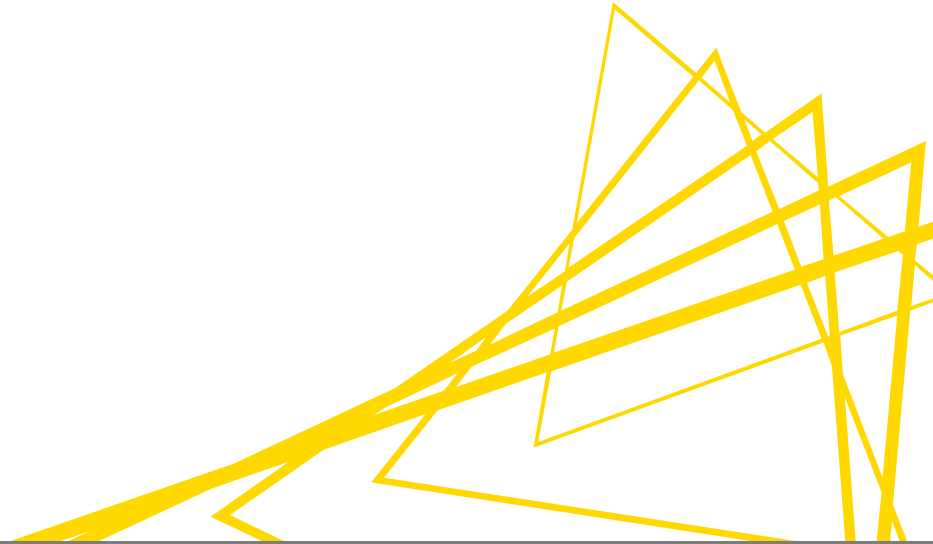
Rexer Analytics Data Science Survey

New Members

- Katharina Koch
 - Karl-Wilhelm
- Sabrina Reiner
- Arthur von Eschen
- Vincenzo Tursi
- Roland Burger
- Mihály Medzihradszky (Medzi)
- Christian Dietz

Summit 2017

Changes & Highlights



New This Year:

- Parallel Tracks on Thursday Morning
- Tech Briefings
- KNIME Case Studies (this year: Guided Analytics)
- and a Panel

During the Breaks: check out the Exhibition Area

Partners:

- Dymatrix
- EPAM (& Infomatix)
- Datatroniq
- Advanced Analytic Services
- GEMMACON
- TIBCO
- Microsoft
- Consist

Partners (cont.)

- Informationsfabrik
- Schrödinger
- Chemaxon / Infocom

and:

- KNIME Demo Station

Wednesday AM...

9:00am - Registration, Coffee & Snacks

10:00am - Opening and KNIME Session

- Welcome and Introduction
Michael Berthold (KNIME)
- What's New
Bernd Wiswedel and Team (KNIME)
- What's Cooking in KNIME Labs
Bernd Wiswedel and Team (KNIME)

12:30pm - Lunch Break

1:30pm - KNIME Session

- A Peek into KNIME Big Data Labs
Tobias Kötter and Team (KNIME)

...Wednesday PM...

2:30pm - Session – KNIME in the Enterprise

- Deploying KNIME to the Enterprise: Reshaping Data & Architecture for Healthcare
James Lumley (Eli Lilly and Company)
- Digital factories with CloudFoundry, KNIME, and BOSH
Jan Pospisil (Siemens), Steffen Zuber & Noah Ispas (Anynines)
- Tech Briefing: Distributed Workflow Executors
Thorsten Mehl (KNIME)

3:45pm - Afternoon Break

4:15pm - Special Session

- The KNIME Model Factory or "Getting your life back"
Iris Adä & Phil Winters (KNIME)

5:00pm - End of Day 1

6:00pm - Coaches depart to Dinner Location

7:00pm - Flying Dinner at "ewerk"

...W!

- Tech Briefing: Distributed Workflow Executors
Thorsten Meinl (KNIME)

3:45pm - Afternoon Break

4:15pm - Special Session

- The KNIME Model Factory or "Getting your life back"
Iris Adä & Phil Winters (KNIME)

5:00pm - End of Day 1

6:00pm - Coaches depart to Dinner Location

7:00pm - Flying Dinner at "ewerk"

Busses leave Hotel at 6pm
Returns starting at 10pm.
Last bus at midnight!

Thursday AM...

8:00am - Registration, Coffee & Snacks

9:00am - Parallel Track

Parallel Track - Life Sciences

- Guided Analytics in Action: Patent Analysis from your Browser
Greg Landrum (KNIME)
- Practical applications of Matched Molecular Pairs (MMPs) at Vernalis
Steve Roughley & Richard Sherhod (Vernalis)

Parallel Track - Connectivity

- Orchestrating a proprietary endurance qualification system for HV batteries with KNIME
Maximilian Mücke (ACCUmotive) and Jürgen Walter (Datatroniq)
- User experience with KNIME for large industrial data sets and applications
Bernhard Lang (Siemens)
- Tech Briefing: Connecting to SAP HANA
Kilian Thiel (KNIME) and Norbert Havas (EPAM)

10:15am - Coffee Break

...Thursday AM...

Parallel Track - Life Sciences	Parallel Track - Customer Intelligence
<ul style="list-style-type: none">○ Image segmentation, single molecule tracking, and data analysis with KNIME and KNIP <i>Jan Eglinger (Friedrich Miescher Institute for Biomedical Research)</i>○ de.NBI - Bioinformatics Integrations for KNIME <i>Knut Reinert (FU Berlin) and colleagues</i>	<ul style="list-style-type: none">○ Venice Airport: a small big data story <i>Fabrizio Montino (Marco Polo Venice Airport) and Dario Cannone (Miracle)</i>○ Guided Analytics in Action: Customer Segmentation from your Browser <i>Rosaria Silipo & Vincenzo Tursi (KNIME)</i>○ Tech Briefing: Customized Distance Functions in KNIME <i>Bernd Wiswedel (KNIME)</i>

12:00pm - Lunch

...Thursday PM...

1:00pm - Session – Data and Tool Blending

- Smart Data at BW Bank – Big Data Analytics with Cassandra, Spark and KNIME
Gerrit Bungeroth (BW Bank) and Stefan Weingaertner (AdvancedAnalytics.Academy)
- Tech Briefing: Instrumenting KNIME with KNIME
Iris Aua (KNIME)
- Will they Blend: An interactive Session
Rosaria Silipo (KNIME) and other blender Guests

2:30pm - Afternoon Break

3:00pm - Session – Internet of Things

- Fault Prediction and Failure Detection of drives using real-time signal processing and machine learning tech
Jürgen Walter & Stefan Weingaertner (Datatroniq)
- Predictive Next Best Action for Marketing Demand Generation and Sales
Eric Bower & Josip Lazarevski (Palo Alto Networks)
- Poster Introduction
Phil Winters (KNIME)

...Thursday PM

4:15pm - Short Break

4:30pm - Special Session

- My Boss Can't Understand My Unsupervised Learning Models
Dean Abbott (Abbott Analytics)

5:30pm - Open Bar and Poster Session



Friday AM Workshops

08:30 **Registration, Coffee & Snacks**

09:30-11:00 **Workshops: Session I**

Name of Workshop	Instructors	Room
SeqAn and OpenMS (CIBI/de.nbi) Integration Workshop	Temesgen H. Dadi (Free Uni. Berlin), Julianus Pfeuffer (Eberhard Karls Uni. Tübingen), Alexander Fillbrunn (Uni. Konstanz)	Berlin-Dubai
3D-e-Chem KNIME Nodes for Integrated Structural Cheminformatics Analysis and Computer-Aided Drug Discovery	M. Vass (Vrije Universiteit Amsterdam), S. Verhoeven (Netherlands eScience Center), R. McGuire (Radboudumc, BioAxis Research), C. de Graaf (Vrije Universiteit Amsterdam)	Berlin-Peking
KNIME Model Factory Workshop: Details, Ideas and Interaction	Iris Adä & Phil Winters (KNIME), Dean Abbott (Abbott Analytics)	Berlin-London
KNIME Image Processing	Christian Dietz & Martin Horn (KNIME)	Berlin-Berlin 1
KNIME Big Data	Tobias Kötter & Björn Lohrmann (KNIME)	Berlin-Berlin 3

Friday AM Workshops

11:00-11:30 **Coffee Break**

11:30-13:00 **Workshops: Session II**

Name of Workshop	Instructors	Room
Helping Your Boss Leverage Advanced Analytics (& KNIME)	Phil Winters & Greg Landrum (KNIME)	Berlin-Dubai
KNIME Text Mining	Kilian Thiel & Roland Burger (KNIME)	Berlin-Peking
KNIME Server	Jon Fuller & Iris Adä (KNIME)	Berlin-London
Data Preparation from the Trenches	Dean Abbott (Abbott Analytics)	Berlin-Berlin 1
IoT Analytics with KNIME	Stefan Weingaertner (Datatroniq)	Berlin-Berlin 3

13:00-14:00 **Lunch and end of KNIME Spring Summit**

Lunch Boxes available!

Up Next?

2017 Fall Summit
November 1-3, 2017. Austin, Texas.



And now back to the Summit...

...have Fun!

